



Bucktons®

TOGETHER CREATING
GREAT CHAMPIONS

RACING PIGEON FEEDING GUIDE

TRIED, TESTED AND TRUSTED



Contents

History and Introduction	3-4
Racing Pigeon General Feeding and Care Guide	5
Superior Plus	6-7
Racing Pigeon Corn Mixtures	8-19
Feeding Guide	20-38
Bucktons in The Community	39





TOGETHER CREATING
ENJOYMENT, LIFE & VITALITY

History of Racing Pigeons

Pigeons and humans have a long history dating back to the time of the ancient Greeks where they were used to carry messages due to their unique homing ability.

Pigeon racing, as we know today, is said to have started in Belgium, and became popular in Great Britain during the 19th and early 20th century. It was particularly popular among working class men in South Wales, Central Scotland and the North of England, where it quickly took off as a major component of working class life.

The appeal of pigeon racing was in the strong social groups created around the excitement and competition of the sport.

Many participants felt it offered an escape from the pressures they encountered at home and work. However, the greatest reward was said, and still remains to be the emotional connection between fancier and pigeon, and is an indication of how pigeons have always been close to our hearts.

The first national race saw some 610 birds from 384 breeders compete from La Rochelle in 1894.

1896 saw the National Homing Union form at the White Swan in Leeds. In 1898 the sport was considered great enough that the Racing Pigeon Journal was created, providing participants with an opportunity to further improve their knowledge, and share this with fellow fanciers all over the country.

History of Bucktons

Bucktons can be traced back over 200 years, starting with the brand's namesake, George Buckton himself. George started out by founding a general merchants company called George Buckton and Sons Co. Ltd. This company part owned a schooner which operated from the original premises at 56 High Street, Hull. The schooner later became known as 'The George', and was used for an array of cargoes, as shown in the selection of original documents from the time held today in the Hull University archives.

After the First World War, George Buckton & Sons Co. Ltd was bought by the Hutchinson family, but it wasn't until the early 1960s that Bucktons as we know it today really took shape. It was then that the first Hutchinson family chairman decided to concentrate the trade on pigeon corn and bird seeds.

From small seeds, great companies grow, and this move earned what was now George Buckton Ltd a fine reputation and a growing trade. In 2005, George Buckton Ltd was reborn as, simply, Bucktons and is now owned by Westland Horticulture Ltd.



SOURCING OF RAW MATERIALS

Sourcing of Raw Materials

Over 100 raw materials are gathered from every continent in the world to be blended into the racing pigeon feeds that are offered under the Bucktons name. Only the very best ingredients, sourced from reputable fairly trading growers are incorporated into the Bucktons range. Bucktons has stood for many years as the brand of quality and consistency, as endorsed by Top Flyers who feed Bucktons quality racing pigeon food.

The standard of the raw materials used allows a final product of superior quality to be provided, complimenting the fancier's knowledge of the importance of a good diet in the sport of pigeon racing.













BUCKTONS PROMISE

Only the very best ingredients, sourced from reputable growers, are incorporated within Bucktons products. This, along with our commitment to cleanliness and consistency, form the key values at the heart of the Bucktons range.



General Feeding and Care Guide

- Fresh food should be made available daily
- Clean water should be made available at all times and changed at least twice a day
- Food should be stored in a cool dry place, free from pests and vermin
- Good loft management and hygiene ensures your pigeons remain healthy and active
- Ensure your loft is well ventilated at all times
- Wash your hands thoroughly after handling birds
- Our products are not intended for human consumption and may contain nuts

PRODUCT RANGE	 BREEDING	 WEANING	 MOULTING	 RACING	 RESTING	 365 DAYS ALL YEAR ROUND
Best All Round						✓
Breed & Wean	✓	✓				
Breeding Mix	✓			200 + miles		
Depurative				60 - 800 + miles		
Diet Supreme				60 - 800 + miles		✓
Dove Food						✓
High Protein Economy						✓
Irish Mix	✓			200 - 800 + miles		
Irish Ruby				300 - 800 + miles		
Light Speed				80 - 450 miles		
Moulting Mix			✓			
Pigeon Condition						✓
Ruby Gold				60 - 800 + miles		
Superior Breeder Plus 	✓	✓				
Superior Plus Low Protein 				60 - 600 miles		
Superior Plus Optimal Racer 				60 - 600 miles		
Super Widowhood				350 + miles		
Super Young Bird	✓			120 - 500 miles		
VIP	✓			120 - 300 miles		
Winter Economy Mix					✓	
Superior Plus Xpert 				300 + miles		
Young Bird		✓		60 - 300 miles		



SUPERIOR *PLUS*



Our Quorum™ Sensing Pellet Technology features in our new Superior Plus Range



OPTIMISE
IMMUNITY



Supports a healthy immune system to keep birds in optimum health

STIMULATES
DIGESTIVE ENZYMES



Stimulates digestive enzymes to optimise digestion of food

A NATURAL
BOOSTER



Using refined botanical ingredients the pellet provides consistent benefits to immunity and digestion

PREVENTS
BACTERIA



Prevents ill health by blocking bacteria from communicating and therefore replicating

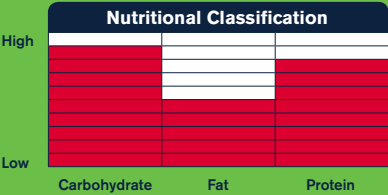
SUPERIOR *PLUS* BREEDER

RACING: 120-300 Miles

DECEMBER TO APRIL

- High protein
- Wide variety of ingredients
- Natural support for immune and digestive systems
- Quorum™ Sensing Technology

Composition: Wheat, Plate Maize, White Peas, Red Maize, Red Dari, Performance Pellet, White Dari, Safflower Seeds, Black Sunflower Seeds, Maple Peas, Tares, Tic Beans, Paddy Rice, Buckwheat, Naked Oats, Linseed, Blue Peas, Toasted Soya Beans and Hempseed.



SUITABLE FOR:

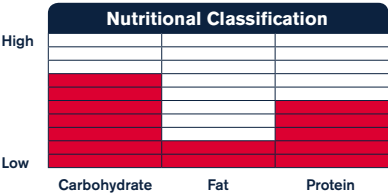
BREEDING MIX

RACING: 200+ Miles

DECEMBER TO APRIL

- Provides protein for breeding
- Assists maintenance of figure and strength
- Includes a variety of peas

Composition: Maple Peas, Wheat, Whole Maize, Red Dari, Tic Beans, Safflower Seed, Blue Peas, White Peas, White Dari and Tares.



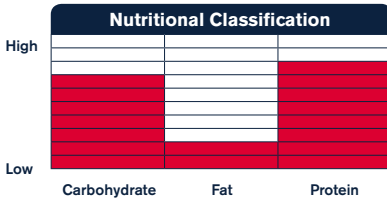
SUITABLE FOR:

BREED & WEAN

JANUARY TO APRIL

- High in protein
- No blue or white peas
- Small seeds for weaning

Composition: Maple Peas, Red Dari, Wheat, Tares, White Dari and Safflower Seed.



SUITABLE FOR:

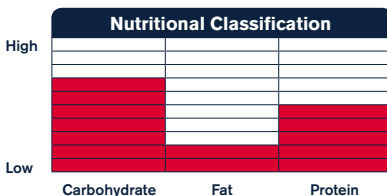


MOULTING MIX

SEPTEMBER TO JANUARY

- Aids feather regeneration
- Aids feather shedding and renewal
- Easily digested

Composition: Wheat, Barley, Whole Maize, Maple Peas, Tic Beans, Red Dari, Blue Peas, White Dari, Safflower Seed, White Peas, Buckwheat, Linseed and Tares.



SUITABLE FOR:



RACING PIGEON CORN MIXTURES

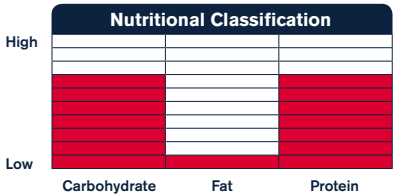
SUPER YOUNG BIRD

RACING: 120-500 Miles

MARCH TO SEPTEMBER

- Contains popcorn maize
- Packed with essential carbohydrates for racing
- Provides protein for body growth and development

Composition: Wheat, Maple Peas, Red Dari, Blue Peas, White Peas, Plate Maize, White Dari, Popcorn Maize, Tares, Safflower Seed and Mung Beans.



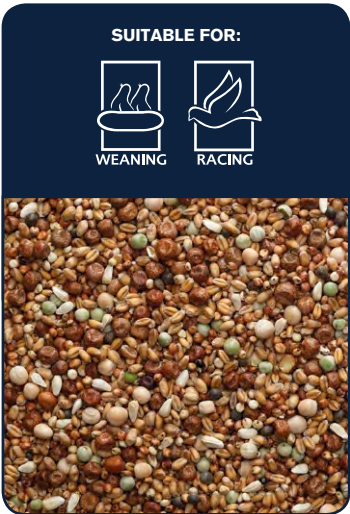
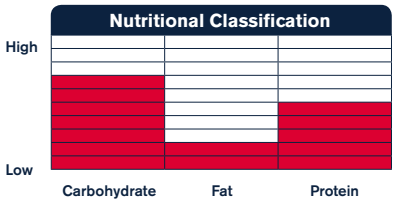
YOUNG BIRD

RACING: 60-300 Miles

MARCH TO SEPTEMBER

- Contains no maize
- Easily digested
- Good balance of protein and energy

Composition: Wheat, Maple Peas, Red Dari, White Peas, White Dari, Blue Peas, Tares and Safflower Seed.



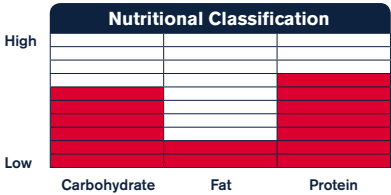
VIP

RACING: 120-300 Miles



MARCH TO SEPTEMBER


- Young bird racing mix
- Ideal for show birds
- High protein

Composition: Maple Peas, Wheat, Red Dari, White Dari, Popcorn Maize, Tares and Safflower Seed.



SUITABLE FOR:





RACING PIGEON CORN MIXTURES

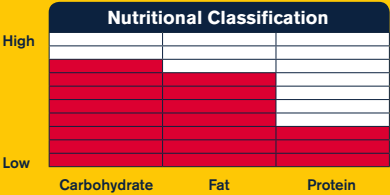
SUPERIOR *PLUS* LOW PROTEIN

RACING: 60-600 Miles

MARCH TO SEPTEMBER

- No peas
- Wide variety of ingredients
- Natural support for immune and digestive systems
- Quorum™ Sensing Technology

Composition: Plate Maize, Safflower Seed, Red Dari, Red Ruby Maize, Performance Pellet, Black Sunflower Seeds, White Dari, Popcorn Maize, Wheat, Barley, Clipped Oats, Buckwheat, Linseed, Paddy Rice and White Rice.



SUITABLE FOR:

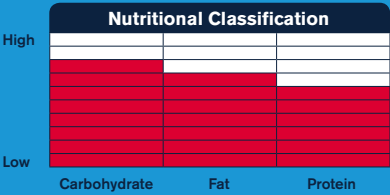
SUPERIOR *PLUS* OPTIMAL RACER

RACING: 60-600 Miles

MARCH TO SEPTEMBER

- Optimum racing nutrition
- Natural support for immune and digestive systems
- Quorum™ Sensing Technology

Composition: Red Dari, Safflower Seed, Plate Maize, Wheat, Performance Pellet, Red Ruby Maize, Black Sunflower Seeds, White Dari, Popcorn Maize, White Peas, Buckwheat, Blue Peas, Tares, Linseed, Maple Peas and White Rice.



SUITABLE FOR:

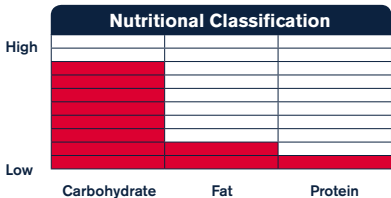
DEPURATIVE

RACING: 60-800+ Miles

ALL YEAR ROUND

- Post race detox
- Reduces toxins built up during a race
- Light and easily digestible
- Feed after racing

Composition: Wheat, Barley, White Dari, Safflower Seed, Naked Oats and Red Dari.



SUITABLE FOR:



WEANING



ALL YEAR ROUND



RACING



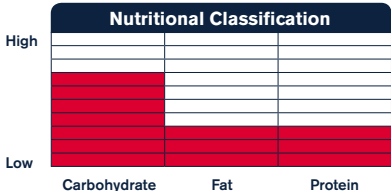
DIET SUPREME

RACING: 60-800+ Miles

APRIL TO SEPTEMBER

- Race conditioner
- Provides essential race nutrients
- Easily digested
- Keeps birds in peak athletic condition for sprint and distance racing

Composition: White Dari, Naked Oats, Wheat, Red Dari, Safflower Seed, Maize Grits, Yellow Millet, Buckwheat, Canary Seed, Paddy Rice, White Rice, Hempseed, Linseed and Black Rapeseed.



SUITABLE FOR:



RACING



IRISH MIX

RACING: 200-800+ Miles

FEBRUARY TO SEPTEMBER

- Balanced carbohydrate and protein mixture
- Popular for both middle and long distances
- Also suitable during breeding

Composition: Maple Peas, Plate Maize, Red Dari, White Dari, Tares, Blue Peas, Safflower Seed and White Peas.

Nutritional Classification

High			
Low			
	Carbohydrate	Fat	Protein

SUITABLE FOR:

BREEDING

RACING

IRISH RUBY

RACING: 300-800+ Miles

MARCH TO SEPTEMBER

- Balanced carbohydrate and protein
- A great all round racing mixture
- Extra fat

Composition: Red Maize, Maple Peas, Red Dari, Plate Maize, White Dari, Tares, Blue Peas, White Peas and Safflower Seed.

Nutritional Classification

High			
Low			
	Carbohydrate	Fat	Protein

SUITABLE FOR:

RACING

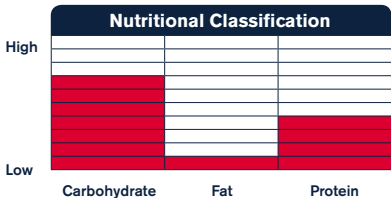
LIGHT SPEED

RACING: 80-450 Miles

APRIL TO SEPTEMBER

- High in energy
- Increases stamina and performance

Composition: Popcorn Maize, Wheat, Maple Peas, Red Dari, White Dari, Safflower Seed, White Peas and Tares.



SUITABLE FOR:

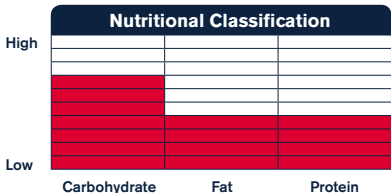


PIGEON CONDITIONER

ALL YEAR ROUND

- Aniseed aroma attractive to birds
- High in essential oils
- Also referred to as 'Trapping Mix'
- Assists in moulting season

Composition: Wheat, Red Dari, White Dari, Naked Oats, Linseed, Safflower Seed, Mung Beans, White Rice, Black Rapeseed, Buckwheat and Aniseed Oil.



SUITABLE FOR:



ALL YEAR ROUND



RUBY GOLD

RACING: 60-800+ Miles



MARCH TO SEPTEMBER

- Superb modern racing mixture
- Red ruby maize for vitamin A
- Can be used on it's own or as a supplement
- Ideal for sprint racing

Composition: Red Ruby Maize, White Dari, Whole Maize, Wheat, Safflower Seed, Red Dari, Mung Beans, Paddy Rice, Naked Oats, Popcorn Maize, White Rice, Linseed and Buckwheat.

	Nutritional Classification		
High			
Low			
	Carbohydrate	Fat	Protein

SUITABLE FOR:



SUPERIOR *PLUS* XPERT

RACING: 300+ Miles

FEBRUARY TO DECEMBER

- Quorum™ Sensing Technology
- Use in the build up to basketing for added energy
- Increases endurance
- Essential for extreme distance racing
- High fat content
- Reusable tub for storage

Composition: Safflower Seed, Naked Oats, Pigeon Performance Pellet, Toasted Soya Beans, Hempseed, Black Rapeseed, Linseed and Sunflower Hearts.

	Nutritional Classification		
High			
Low			
	Carbohydrate	Fat	Protein

SUITABLE FOR:





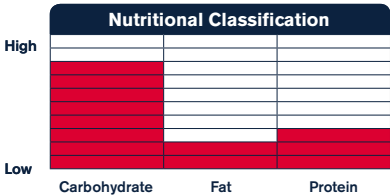
SUPER WIDOWHOOD

RACING: 350+ Miles

APRIL TO SEPTEMBER

- An advanced Widowhood racing mixture
- High in carbohydrates
- Enhances stamina and performance

Composition: Whole Maize, Wheat, Red Dari, Plate Maize, White Dari, Maple Peas, Safflower Seed and Tares.



SUITABLE FOR:

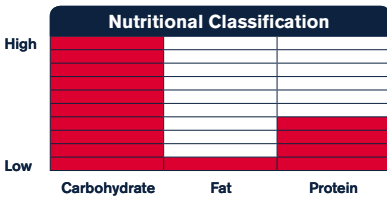


BEST ALL ROUND

ALL YEAR ROUND

- Excellent all round formula
- Includes hempseed oil
- Improves muscle recovery after racing

Composition: Maple Peas, Whole Maize, Wheat, Red Dari, White Peas, White Dari, Safflower Seed and Hempseed Oil.



SUITABLE FOR:

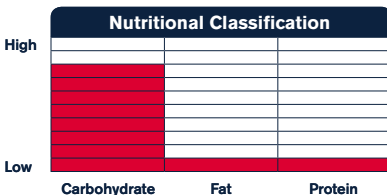


DOVE FOOD

ALL YEAR ROUND

- High oil content
- Provides a balanced diet of wheats and grains
- An ideal general purpose mixture

Composition: Wheat, Maize Grits, Barley, Red Dari, Linseed, Black Rapeseed.



SUITABLE FOR:

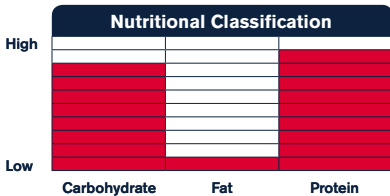


HIGH PROTEIN ECONOMY

ALL YEAR ROUND

- All round formulation
- High in protein
- Economical racing mix

Composition: Wheat, Whole Maize, Tic Beans, Maple Peas, Blue Peas and Tares.



SUITABLE FOR:



ALL YEAR ROUND

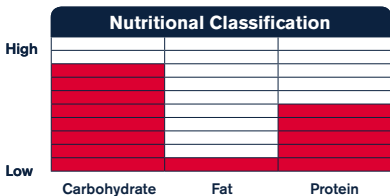


WINTER ECONOMY MIX

OCTOBER TO MARCH

- Ideal for resting
- Low protein
- Low fat

Composition: Wheat, Barley, Whole Maize, Maple Peas, Tic Beans, White Peas, Blue Peas and Red Dari.



SUITABLE FOR:



RESTING



RESTING

FOR CHAMPIONS OF THE SKIES

It's not the taking part that counts; it's the thrill of the win. It's putting your heart and soul into every race and show. It's knowing that you've got what it takes to be the best of the best.

At Bucktons, we know how much you put in to breed champion flyers. That's why we only use the very best ingredients to create the winning formula for performance, strength and stamina. So go on and reach for the skies! We're with you all the way.







Feeding Guide Introduction

The aim of this guide is to provide all levels of fancier with a more detailed insight into the Bucktons range of Racing Pigeon Food and provide recommendations of when and how to feed our different mixes.

As with any sport an athlete's performance will depend on many factors including their environment, their training conditions, and of course their diet.

We hope you find the guide of interest, and that the advice offered helps bring you success throughout the season.

The Pigeon Year

	 BREEDING	 RACING	 RESTING	 MOULTING
JANUARY				
FEBRUARY				
MARCH				
APRIL				
MAY				
JUNE				
JULY				
AUGUST				
SEPTEMBER				
OCTOBER				
NOVEMBER				
DECEMBER				

Widowhood Short Distance

DAY	MORNING	EVENING
SATURDAY DAY OF ARRIVAL	–	Depurative 100%
	Black or pink minerals & Pigeon Grit should be available all day	
SUNDAY	Depurative 100%	Depurative 100%
	Black or pink minerals & Pigeon Grit should be available all day	
MONDAY	Depurative 100%	Diet Supreme 100%
	Black or pink minerals & Pigeon Grit should be available all day	
TUESDAY	Diet Supreme 100%	Diet Supreme 100%
	Black or pink minerals & Pigeon Grit should be available all day	
WEDNESDAY	Diet Supreme 100%	Super Widowhood 50% + Xpert 50%
	Black or pink minerals & Pigeon Grit should be available all day	
THURSDAY	Super Widowhood 50% + Xpert 50%	Super Widowhood 50% + Xpert 50%
	Black or pink minerals & Pigeon Grit should be available all day	
FRIDAY DAY OF BASKETING	Super Widowhood 50% + Xpert 50%	–
	Black or pink minerals & Pigeon Grit should be available all day	

Widowhood Middle Distance

DAY	MORNING	EVENING
SATURDAY DAY OF ARRIVAL	–	Depurative 100%
	Black or pink minerals & Pigeon Grit should be available all day	
SUNDAY	Depurative 100%	Depurative 100%
	Black or pink minerals & Pigeon Grit should be available all day	
MONDAY	Diet Supreme 50% + Light Speed 50%	Light Speed 50% + Diet Supreme 50%
	Black or pink minerals & Pigeon Grit should be available all day	
TUESDAY	Diet Supreme 50% + Light Speed 50%	Light Speed 50% + Xpert 50%
	Black or pink minerals & Pigeon Grit should be available all day	
WEDNESDAY	Light Speed 50% + Pigeon Conditioner 50%	Light Speed 50% + Xpert 50%
	Black or pink minerals & Pigeon Grit should be available all day	
THURSDAY	Light Speed 50% + Xpert 50%	Light Speed 50% + Xpert 50%
	Black or pink minerals & Pigeon Grit should be available all day	
FRIDAY DAY OF BASKETING	Light Speed 50% + Xpert 50%	Xpert 100%
	Black or pink minerals & Pigeon Grit should be available all day	

Widowhood Long Distance

DAY	MORNING	EVENING
SATURDAY DAY OF ARRIVAL	–	Diet Supreme 100%
	Black or pink minerals & Pigeon Grit should be available all day	
SUNDAY	Diet Supreme 100%	Diet Supreme 50% + Xpert 50%
	Black or pink minerals & Pigeon Grit should be available all day	
MONDAY	Super Widowhood 50% + Diet Supreme 50%	Super Widowhood 50% + Xpert 50%
	Black or pink minerals & Pigeon Grit should be available all day	
TUESDAY	Super Widowhood 50% + Xpert 50%	Super Widowhood 50% + Xpert 50%
	Black or pink minerals & Pigeon Grit should be available all day	
WEDNESDAY	Super Widowhood 50% + Xpert 50%	Super Widowhood 50% + Xpert 50%
	Black or pink minerals & Pigeon Grit should be available all day	
THURSDAY DAY OF BASKETING	Super Widowhood 50% + Xpert 50%	Super Widowhood 50% + Xpert 50%
	Black or pink minerals & Pigeon Grit should be available all day	
FRIDAY	–	–
	Black or pink minerals & Pigeon Grit should be available all day	

Sprinting for Widowhood

DAY	MORNING	EVENING
SATURDAY DAY OF ARRIVAL	–	Depurative 100%
	Black or pink minerals & Pigeon Grit should be available all day	
SUNDAY	Depurative 100%	Depurative 100%
	Black or pink minerals & Pigeon Grit should be available all day	
MONDAY	Depurative 100%	Diet Supreme 50% + Ruby Gold 50%
	Black or pink minerals & Pigeon Grit should be available all day	
TUESDAY	Diet Supreme 50% + Ruby Gold 50%	Ruby Gold 50% + Pigeon Conditioner 50%
	Black or pink minerals & Pigeon Grit should be available all day	
WEDNESDAY	Ruby Gold 50% + Pigeon Conditioner 50%	Ruby Gold 100%
	Black or pink minerals & Pigeon Grit should be available all day	
THURSDAY	Ruby Gold 50% + Pigeon Conditioner 50%	Ruby Gold 100%
	Black or pink minerals & Pigeon Grit should be available all day	
FRIDAY DAY OF BASKETING	Ruby Gold 100%	Pigeon Conditioner 100%
	Black or pink minerals & Pigeon Grit should be available all day	

Young bird Racing System without Maize

DAY	MORNING	EVENING
SATURDAY DAY OF ARRIVAL	–	Young Bird 100%
	Black or pink minerals & Pigeon Grit should be available all day	
SUNDAY	Depurative 100%	Depurative 100%
	Black or pink minerals & Pigeon Grit should be available all day	
MONDAY	Diet Supreme 100%	Diet Supreme 100%
	Black or pink minerals & Pigeon Grit should be available all day	
TUESDAY	Diet Supreme 100%	Young Bird 100%
	Black or pink minerals & Pigeon Grit should be available all day	
WEDNESDAY	Young Bird 50% + Diet Supreme 50%	Young Bird 100%
	Black or pink minerals & Pigeon Grit should be available all day	
THURSDAY	Young Bird 50% + Diet Supreme 50%	Young Bird 100%
	Black or pink minerals & Pigeon Grit should be available all day	
FRIDAY DAY OF BASKETING	Young Bird 50% + Diet Supreme 50%	Pigeon Conditioner 100%
	Black or pink minerals & Pigeon Grit should be available all day	

Young Bird Racing Fat System

DAY	MORNING	EVENING
SATURDAY DAY OF ARRIVAL	–	Ruby Gold 50% + Diet Supreme 50%
	Black or pink minerals & Pigeon Grit should be available all day	
SUNDAY	Diet Supreme 100%	Ruby Gold 50% + Diet Supreme 50%
	Black or pink minerals & Pigeon Grit should be available all day	
MONDAY	Ruby Gold 50% + Diet Supreme 50%	Ruby Gold 100%
	Black or pink minerals & Pigeon Grit should be available all day	
TUESDAY	Ruby Gold 50% + Diet Supreme 50%	Ruby Gold 100%
	Black or pink minerals & Pigeon Grit should be available all day	
WEDNESDAY	Ruby Gold 50% + Xpert 50%	Ruby Gold 100%
	Black or pink minerals & Pigeon Grit should be available all day	
THURSDAY	Ruby Gold 50% + Pigeon Conditioner 50%	Ruby Gold 50% + Xpert 50%
	Black or pink minerals & Pigeon Grit should be available all day	
FRIDAY DAY OF BASKETING	Ruby Gold 50% + Pigeon Conditioner 50%	Xpert 100%
	Black or pink minerals & Pigeon Grit should be available all day	

Young Bird Racing System 1

DAY	MORNING	EVENING
SATURDAY DAY OF ARRIVAL	–	Diet Supreme 100%
	Black or pink minerals & Pigeon Grit should be available all day	
SUNDAY	Diet Supreme 100%	Diet Supreme 100%
	Black or pink minerals & Pigeon Grit should be available all day	
MONDAY	VIP 50% + Diet Supreme 50%	VIP 50% + Diet Supreme 50%
	Black or pink minerals & Pigeon Grit should be available all day	
TUESDAY	VIP 50% + Diet Supreme 50%	VIP 100%
	Black or pink minerals & Pigeon Grit should be available all day	
WEDNESDAY	VIP 50% + Diet Supreme 50%	VIP 100%
	Black or pink minerals & Pigeon Grit should be available all day	
THURSDAY	VIP 50% + Pigeon Conditioner 50%	VIP 100%
	Black or pink minerals & Pigeon Grit should be available all day	
FRIDAY DAY OF BASKETING	VIP 50% + Pigeon Conditioner 50%	–
	Black or pink minerals & Pigeon Grit should be available all day	

Young Bird Racing System 2

DAY	MORNING	EVENING
SATURDAY DAY OF ARRIVAL	–	Depurative 100%
	Black or pink minerals & Pigeon Grit should be available all day	
SUNDAY	Depurative 100%	Depurative 100%
	Black or pink minerals & Pigeon Grit should be available all day	
MONDAY	Diet Supreme 100%	Diet Supreme 100%
	Black or pink minerals & Pigeon Grit should be available all day	
TUESDAY	Diet Supreme 100%	Super Widowhood 100%
	Black or pink minerals & Pigeon Grit should be available all day	
WEDNESDAY	Diet Supreme 50% + VIP 50%	Super Widowhood 100%
	Black or pink minerals & Pigeon Grit should be available all day	
THURSDAY	VIP 50% + Diet Supreme 25% + Pigeon Conditioner 25%	Super Widowhood 100%
	Black or pink minerals & Pigeon Grit should be available all day	
FRIDAY DAY OF BASKETING	VIP 50% + Diet Supreme 25% + Pigeon Conditioner 25%	–
	Black or pink minerals & Pigeon Grit should be available all day	

Breeding Weeks 1, 2 and 3 of 8 week preparing plan

WEEK

1

WEEK

2

WEEK

3

DAY	MORNING	EVENING
SATURDAY	Moulting Mix 100%	Moulting Mix 100%
	Black or pink minerals & Pigeon Grit should be available all day	
SUNDAY	Moulting Mix 100%	Moulting Mix 100%
	Black or pink minerals & Pigeon Grit should be available all day	
MONDAY	Moulting Mix 100%	Moulting Mix 100%
	Black or pink minerals & Pigeon Grit should be available all day	
TUESDAY	Moulting Mix 100%	Moulting Mix 100%
	Black or pink minerals & Pigeon Grit should be available all day	
WEDNESDAY	Moulting Mix 100%	Moulting Mix 100%
	Black or pink minerals & Pigeon Grit should be available all day	
THURSDAY	Moulting Mix 100%	Moulting Mix 100%
	Black or pink minerals & Pigeon Grit should be available all day	
FRIDAY	Moulting Mix 100%	Moulting Mix 100%
	Black or pink minerals & Pigeon Grit should be available all day	

Breeding Weeks 4 and 5 of 8 week preparing plan

WEEK **4** WEEK **5**

DAY	MORNING	EVENING
SATURDAY	Breeding Mix 50% + Depurative 50%	Breeding Mix 50% + Depurative 50%
	Black or pink minerals & Pigeon Grit should be available all day	
SUNDAY	Breeding Mix 50% + Depurative 50%	Breeding Mix 50% + Depurative 50%
	Black or pink minerals & Pigeon Grit should be available all day	
MONDAY	Breeding Mix 50% + Depurative 50%	Breeding Mix 50% + Depurative 50%
	Black or pink minerals & Pigeon Grit should be available all day	
TUESDAY	Breeding Mix 50% + Depurative 50%	Breeding Mix 50% + Depurative 50%
	Black or pink minerals & Pigeon Grit should be available all day	
WEDNESDAY	Breeding Mix 50% + Depurative 50%	Breeding Mix 50% + Depurative 50%
	Black or pink minerals & Pigeon Grit should be available all day	
THURSDAY	Breeding Mix 50% + Depurative 50%	Breeding Mix 50% + Depurative 50%
	Black or pink minerals & Pigeon Grit should be available all day	
FRIDAY	Breeding Mix 50% + Depurative 50%	Breeding Mix 50% + Depurative 50%
	Black or pink minerals & Pigeon Grit should be available all day	

Breeding Weeks 6 of 8 week preparing plan

WEEK
6

DAY	MORNING	EVENING
SATURDAY	Breeding Mix 50% + Diet Supreme 50%	Breeding Mix 50% + Diet Supreme 50%
	Black or pink minerals & Pigeon Grit should be available all day	
SUNDAY	Breeding Mix 50% + Diet Supreme 50%	Breeding Mix 50% + Diet Supreme 50%
	Black or pink minerals & Pigeon Grit should be available all day	
MONDAY	Breeding Mix 50% + Diet Supreme 50%	Breeding Mix 50% + Diet Supreme 50%
	Black or pink minerals & Pigeon Grit should be available all day	
TUESDAY	Breeding Mix 50% + Diet Supreme 50%	Breeding Mix 50% + Diet Supreme 50%
	Black or pink minerals & Pigeon Grit should be available all day	
WEDNESDAY	Breeding Mix 50% + Diet Supreme 50%	Breeding Mix 50% + Diet Supreme 50%
	Black or pink minerals & Pigeon Grit should be available all day	
THURSDAY	Breeding Mix 50% + Diet Supreme 50%	Breeding Mix 50% + Diet Supreme 50%
	Black or pink minerals & Pigeon Grit should be available all day	
FRIDAY	Breeding Mix 50% + Diet Supreme 50%	Breeding Mix 50% + Diet Supreme 50%
	Black or pink minerals & Pigeon Grit should be available all day	

Breeding Weeks 7 and 8 of 8 week preparing plan

WEEK **7** WEEK **8**

DAY	MORNING	EVENING
SATURDAY	Breeding Mix 100%	Breeding Mix 100%
	Black or pink minerals & Pigeon Grit should be available all day	
SUNDAY	Breeding Mix 100%	Breeding Mix 100%
	Black or pink minerals & Pigeon Grit should be available all day	
MONDAY	Breeding Mix 100%	Breeding Mix 100%
	Black or pink minerals & Pigeon Grit should be available all day	
TUESDAY	Breeding Mix 100%	Breeding Mix 100%
	Black or pink minerals & Pigeon Grit should be available all day	
WEDNESDAY	Breeding Mix 100%	Breeding Mix 100%
	Black or pink minerals & Pigeon Grit should be available all day	
THURSDAY	Breeding Mix 100%	Breeding Mix 100%
	Black or pink minerals & Pigeon Grit should be available all day	
FRIDAY	Breeding Mix 100%	Breeding Mix 100%
	Black or pink minerals & Pigeon Grit should be available all day	

Breeding Sitting

DAY	MORNING	EVENING
SATURDAY	Breeding Mix 50% + Depurative 50%	Breeding Mix 50% + Depurative 50%
	Black or pink minerals & Pigeon Grit should be available all day	
SUNDAY	Breeding Mix 50% + Depurative 50%	Breeding Mix 50% + Depurative 50%
	Black or pink minerals & Pigeon Grit should be available all day	
MONDAY	Breeding Mix 50% + Depurative 50%	Breeding Mix 50% + Depurative 50%
	Black or pink minerals & Pigeon Grit should be available all day	
TUESDAY	Breeding Mix 50% + Depurative 50%	Breeding Mix 50% + Depurative 50%
	Black or pink minerals & Pigeon Grit should be available all day	
WEDNESDAY	Breeding Mix 50% + Depurative 50%	Breeding Mix 50% + Depurative 50%
	Black or pink minerals & Pigeon Grit should be available all day	
THURSDAY	Breeding Mix 50% + Depurative 50%	Breeding Mix 50% + Depurative 50%
	Black or pink minerals & Pigeon Grit should be available all day	
FRIDAY	Breeding Mix 50% + Depurative 50%	Breeding Mix 50% + Depurative 50%
	Black or pink minerals & Pigeon Grit should be available all day	

Breeding 5 days before egg hatched up until weaning

DAY	MORNING	EVENING
SATURDAY	Breeding Mix 100%	Breeding Mix 100%
	Black or pink minerals & Pigeon Grit should be available all day	
SUNDAY	Breeding Mix 100%	Breeding Mix 100%
	Black or pink minerals & Pigeon Grit should be available all day	
MONDAY	Breeding Mix 100%	Breeding Mix 100%
	Black or pink minerals & Pigeon Grit should be available all day	
TUESDAY	Breeding Mix 100%	Breeding Mix 100%
	Black or pink minerals & Pigeon Grit should be available all day	
WEDNESDAY	Breeding Mix 100%	Breeding Mix 100%
	Black or pink minerals & Pigeon Grit should be available all day	
THURSDAY	Breeding Mix 100%	Breeding Mix 100%
	Black or pink minerals & Pigeon Grit should be available all day	
FRIDAY	Breeding Mix 100%	Breeding Mix 100%
	Black or pink minerals & Pigeon Grit should be available all day	

Breeding Squeaker/Young Birds

WEEK	WEEK	WEEK	WEEK	WEEK	WEEK
1	2	3	4	5	6

DAY	MORNING	EVENING
SATURDAY	Breed & Wean 100%	Breed & Wean 100%
	Black or pink minerals & Pigeon Grit should be available all day	
SUNDAY	Breed & Wean 100%	Breed & Wean 100%
	Black or pink minerals & Pigeon Grit should be available all day	
MONDAY	Breed & Wean 100%	Breed & Wean 100%
	Black or pink minerals & Pigeon Grit should be available all day	
TUESDAY	Breed & Wean 100%	Breed & Wean 100%
	Black or pink minerals & Pigeon Grit should be available all day	
WEDNESDAY	Breed & Wean 100%	Breed & Wean 100%
	Black or pink minerals & Pigeon Grit should be available all day	
THURSDAY	Breed & Wean 100%	Breed & Wean 100%
	Black or pink minerals & Pigeon Grit should be available all day	
FRIDAY	Breed & Wean 100%	Breed & Wean 100%
	Black or pink minerals & Pigeon Grit should be available all day	

Moulting

DAY	MORNING	EVENING
SATURDAY	Moulting Mix 80% + Pigeon Conditioner 20%	Moulting Mix
	Black or pink minerals & Pigeon Grit should be available all day	
SUNDAY	Moulting Mix 80% + Pigeon Conditioner 20%	Moulting Mix
	Black or pink minerals & Pigeon Grit should be available all day	
MONDAY	Moulting Mix	Moulting Mix
	Black or pink minerals & Pigeon Grit should be available all day	
TUESDAY	Moulting Mix 80% + Pigeon Conditioner 20%	Moulting Mix
	Black or pink minerals & Pigeon Grit should be available all day	
WEDNESDAY	Moulting Mix	Moulting Mix
	Black or pink minerals & Pigeon Grit should be available all day	
THURSDAY	Moulting Mix 80% + Pigeon Conditioner 20%	Moulting Mix
	Black or pink minerals & Pigeon Grit should be available all day	
FRIDAY	Moulting Mix	Moulting Mix
	Black or pink minerals & Pigeon Grit should be available all day	

Natural Racing

DAY	MORNING	EVENING
SATURDAY DAY OF ARRIVAL	–	Irish Ruby 100%
	Black or pink minerals & Pigeon Grit should be available all day	
SUNDAY	Irish Ruby 100%	Diet Supreme 50% + Pigeon Conditioner 50%
	Black or pink minerals & Pigeon Grit should be available all day	
MONDAY	Diet Supreme 50% + Pigeon Conditioner 50%	Diet Supreme 50% + Irish Ruby 50%
	Black or pink minerals & Pigeon Grit should be available all day	
TUESDAY	Irish Ruby 50% + Diet Supreme 25% + Xpert 25%	Irish Ruby 50% + Diet Supreme 25% + Xpert 25%
	Black or pink minerals & Pigeon Grit should be available all day	
WEDNESDAY	Xpert 50% + Irish Ruby 50%	Irish Ruby 100%
	Black or pink minerals & Pigeon Grit should be available all day	
THURSDAY DAY OF BASKETING	Irish Ruby 100%	Irish Ruby 100%
	Black or pink minerals & Pigeon Grit should be available all day	
FRIDAY	–	–

Bucktons in the Community

Throughout the years Bucktons has worked closely within the pigeon racing community both with the fancier and behind the scenes.

Bucktons continually strive for improvement and innovations that will be of benefit to the fancier. Research and trials on new and exciting mixes are ongoing to find winning formulations to return success in today's demanding sport.

As well as exhibiting its famous products, Bucktons is also a sponsor of many leading pigeon shows throughout Great Britain.

Sponsorship covers events at both national and regional levels and includes shows such as the The British Homing World Show of the Year in Blackpool, The Up North Combine, The North East Homing Union Show of the Year in Peterlee, and the National Flying Club.

Bucktons' involvement also extends to the individual, and our invaluable relationships with fanciers over the years have contributed towards making Bucktons the success that it is today.

A special thank you to Chris Sutton for the use of his photography on this cover and our new packaging.

www.racing-pigeon-media.com



TOGETHER CREATING
ENJOYMENT, LIFE & VITALITY

You can download a
digital version of this
feeding guide at
www.bucktons.co.uk



STOCKISTS AVAILABLE NATIONWIDE

For your nearest stockist, or for
more information, please call
our free support team:

01480 443 789



Tel: +44(0) 1480 443 789

Pexton Road • Kelleythorpe Industrial Estate • Driffield • East Yorkshire • YO25 9DJ
customer.care@bucktons.co.uk • www.bucktons.co.uk